



金香料私人有限公司
MASCHEM SDN. BHD. (No : 169345-K)

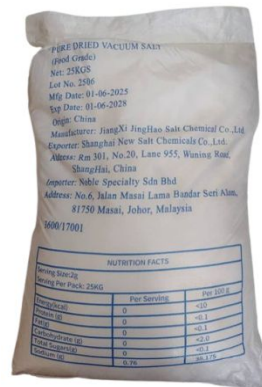
No.96,Jalan Taming 6, Taman Taming Jaya, 43300 Balakong, Selangor
 Email:001maschem@gmail.com Tel:07-3881930 Fax:07-3881932

SPECIFICATION

COMMODITY : **PDV SALT**

ORIGIN : **China**

PACKING : **25kgs Bag**



CHARACTERISTICS	SPECIFICATION	METHOD
Presentation	(base)	
Size 0.15 - 0.85mm	85% Min.	GB/T 13025.1
Assay (as NaCl on dry basis)	99.10 Min.	GB5461-2016
Whiteness	80 Min.	GB/T 13025.2
Moisture %	0.30 Max.	GB/T 13025.3
Insoluble Matter %	0.05 Max.	GB/T 13025.4
CaSO ₄ %	0.10 Max.	GB/T 13025.5
Na ₂ SO ₄ %	0.30 Max.	GB5461-2016
[Fe(CN) ₆] ⁻⁴	10 ppm Max.	GB5461-2016
KIO ₃ (I)	20 - 40ppm	GB/T 13025.7
Ca	20ppm Max.	GB/T 13025.6
Mg	1ppm Max.	GB/T 13025.6
Hg	0.1ppm Max.	GB/T 13025.7
Pb	2ppm Max.	GB/T 13025.10
Fe	5ppm Max.	GB/T 13025.11
Cu	2ppm Max.	GB/T 13025.12
Sb	0.5ppm Max.	GB/T 13025.12
Cd	0.5ppm Max.	GB/T 13025.12
As	0.5ppm Max.	GB/T 13025.13